



FLOORING SYSTEMS



University of Brighton

**CLERKENWELL
DESIGN WEEK**

21-23 MAY 2019

The **Forbo** *Collection*



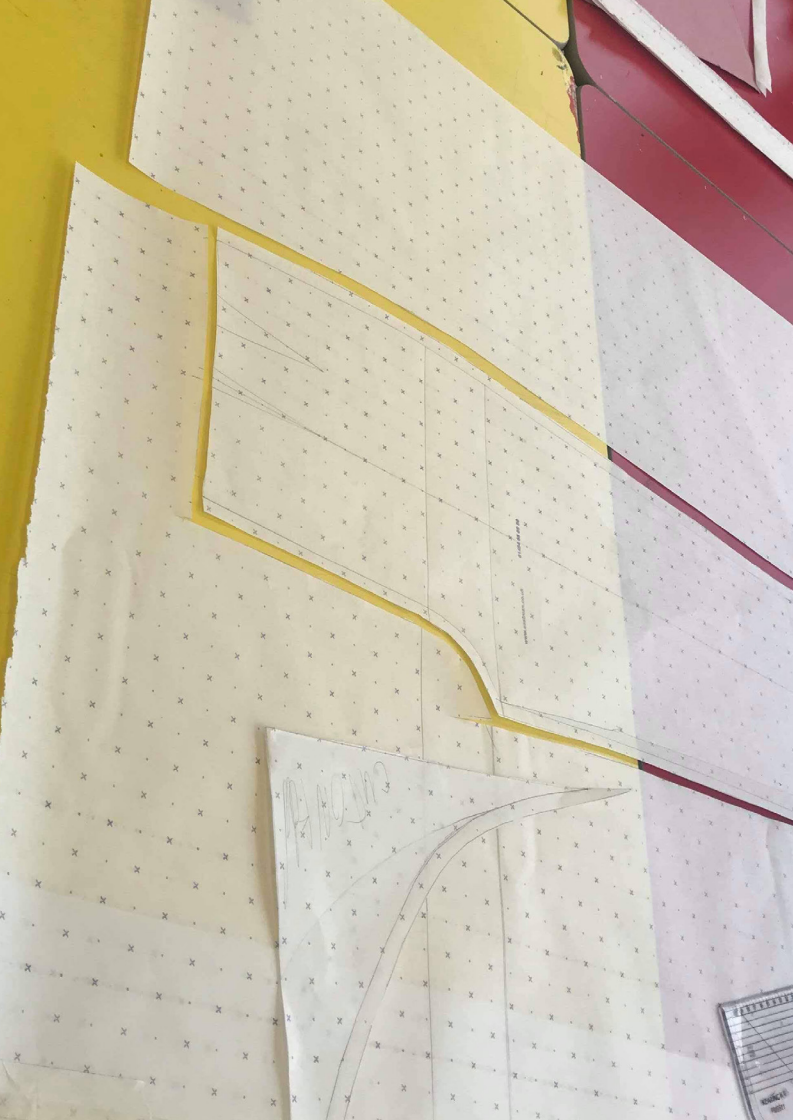
Introducing The Forbo Collection

A collaboration with fashion students at the University of Brighton that combines our innovative flooring with their innovative minds!

We present to you a collection comprised of one off pieces made entirely from Forbo materials, inspired by the natural origins of our products and the urban environments we implement them in.

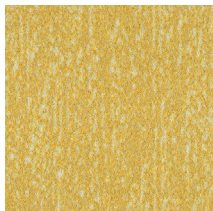
In the pages of this zine, the students share their inspiration and ideas behind each garment design.







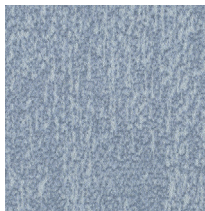
**Flotex Canyon
Sulphur 445030**



**Flotex Canyon
Linen 445023**



**Flotex Canyon
Cloud 445024**



flotex®



The urban landscape is an intersection of organic and geometric, immersed in a palette of vibrant colours and textures. In response to this we have manipulated spiralling strands of Flotex to grow out of an undulating floor. Flotex is the hero of this piece and embodies its urban theme through its high-tech textile which is soft, flexible and hard wearing. Flotex weaves over the silhouette of a human form and then interlaces with geometric juxtaposing pieces of Marmoleum.

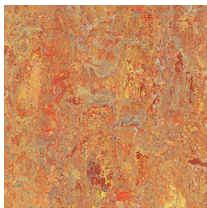
www.forbo-flooring.co.uk/flotex



Marmoleum
Granada 3405



Marmoleum
Asian Tiger 3403

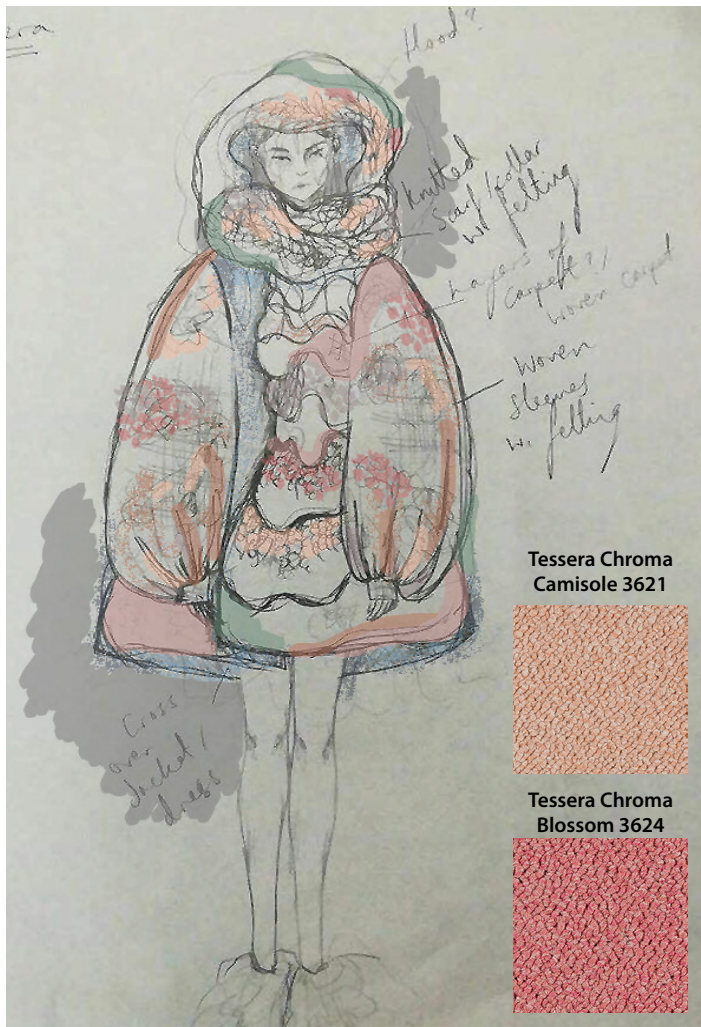


Marmoleum
Chartreuse 3224

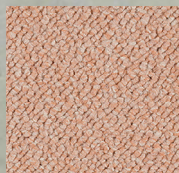




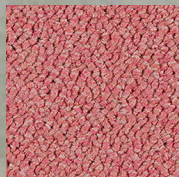
www.forbo-flooring.co.uk/marmoleum



**Tessera Chroma
Camisole 3621**



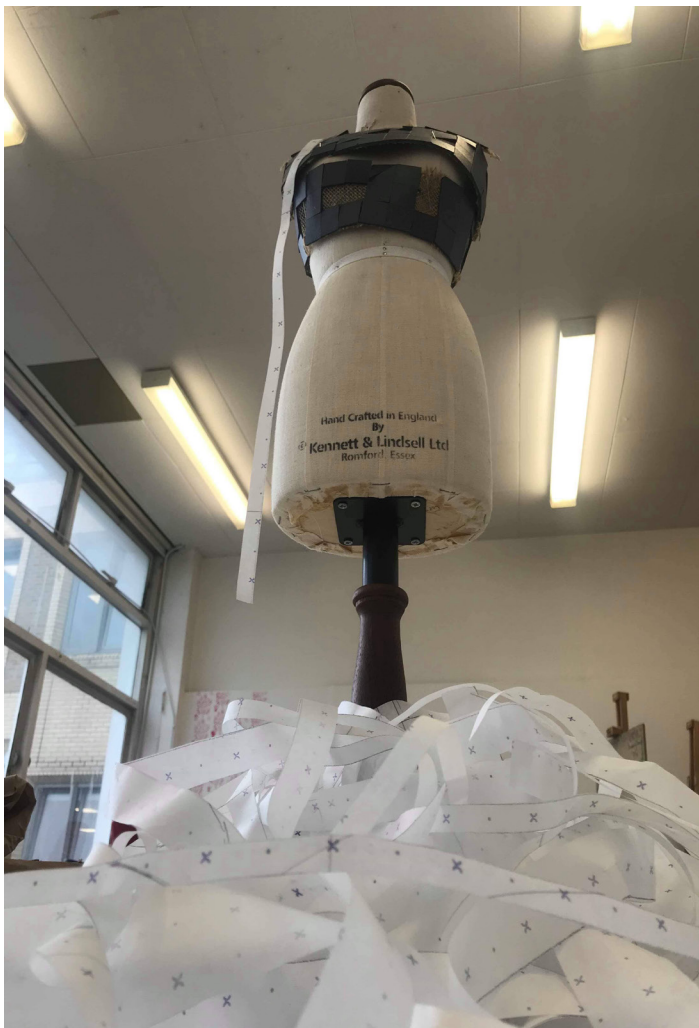
**Tessera Chroma
Blossom 3624**





tessera[®]

For this piece, we worked with Forbo's [Tessera Cloudscape](https://www.forbo-flooring.co.uk/tessera) & Chroma collections. As the ranges are inspired by clouds and pastel colours, as well as being the only traditional carpet product used, we wanted to focus on textile techniques to create a soft and a tactile aesthetic. Using the yarns that make up the product; we have weaved the majority of the piece ourselves, with the finished carpet product integrated into the design. The colours used are seen in a sunset, and the design is voluminous in shape.



Our collaborative installation with Forbo Flooring aims to embody the unification of ethos which spans three product categories — Marmoleum linoleum, Tessera carpet tiles and Flotex flocked flooring. Individually, the installations delve into the story of the materials and processes involved in manufacturing the products.







FLOORING SYSTEMS

We like to think that the floor coverings that we design and manufacture provide an inspirational basis for interior designs. We aim at helping you create inspiring and high performing interiors which leave lasting impressions. With Forbo you get more than a floor.

We pride ourselves on offering a truly comprehensive product portfolio with leading edge products specifically designed to cater for each area of a project.

From entrance to exit, whether new build or refurbishment, our integrated flooring portfolio can help you choose the right flooring solutions for your project.

To find out more, please visit
www.forbo-flooring.co.uk/products

UK

Forbo Flooring UK Limited
High Holborn Road
Ripley
Derbyshire DE5 3NT

London EC1 showroom
79 St John Street, Clerkenwell
London EC1M 4NR
Tel: 0207 553 9300

For commercial enquiries:

*If calling from the North,
London & South East*
Tel: 0800 0282 162
bcs.flooring.uk@forbo.com

*If calling from Scotland,
Midlands & South West*
Tel: 0800 0935 258
Fax: 01592 643 999
kcs.flooring.uk@forbo.com

Registered office:

Forbo Flooring UK Limited
High Holborn Road
Ripley
Derbyshire DE5 3NT
Registered in England 9200318

Find us on



Nuway enquiries:

Tel: 01773 740 688
Fax: 01773 740 640

efs.flooring.uk@forbo.com

Residential enquiries:

Tel: 0800 0935 846
Fax: 01592 643 999
krcs.flooring.uk@forbo.com
www.forbo-flooring.co.uk

Sample orders:

Tel: 0800 731 2369
samples.uk@forbo.com

Ireland

Forbo Ireland Ltd
2 Deansgrange Business Park
Blackrock
Co Dublin

Tel: 00353 1 2898 898
Fax: 00353 1 2898 177
info.ireland@forbo.com
www.forbo-flooring.ie

